

JANUS MT 3B S4

Order Code: 1360035

Access Control Safety Light Curtain with Integrated Muting Function, Automatic/Manual Restart and EDM, T-Logic (Entry-Exit), Parallel Beams



Safety level

Type 4 - PL e

Protected height (mm)

810

Resolution (mm)

Multi-beams

Max. range (m)

2

Restart

Built-in - User selectable automatic or manual

Functioning system

Emitter / Receiver

Muting Function

Integrated with Muting arms

Technical Description

Safety Light Curtain: Type 4, SIL 3, SILCL 3, PL e, Cat. 4

Cross Section: 50 x 60 mm

Hardware configuration: no programming necessary, easy to install and replace

Configuration through main connector

Built-in Muting sensors with 4 parallel beams: pre-wired, pre-aligned, adjustable in height and angle

Two-way access control system with entry-exit T-Muting logic

M12 connectors for external Muting sensors, with operating logic with 2 or 4 sensors

Unshielded cables up to 100 m can be used to connect the Safety Light Curtain

What's in the Box: Emitter, Receiver and Standard Fastening Brackets

JANUS MT 3B S4

Features

Safety level	Type 4 - PL e
Protected height (mm)	810
Resolution (mm)	Multi-beams
Max. range (m)	2
Restart	Built-in - User selectable automatic or manual
Functioning system	Emitter / Receiver
Safety level (SIL / PL)	Type 4 - SIL 3 - SILCL 3 - PL e - Cat. 4
Operating temperature (°C)	- 10 ... 55
Response time (ms)	7
Number of beams	3
Max. length of the connection cables (m)	100
Muting Function	Integrated with Muting arms
Muting logic	T (Two way) Logic with 4 parallel beams
Max. override time-out	15 min.
Max. Muting time-out	30 sec. or infinite selectable
Muting sensor field	Adjustable height and tilting
Muting sensors	4 optoelectronic, built-in, pre-aligned and pre-wired with parallel beams
Signalling	7 segment display and LEDs for diagnostics, light curtain's status and Muting sensors status
Safety output type	2 fail-safe PNP (500 mA at 24 VDC) with protection against short circuit, overload and reverse polarity

Connections	M12 5-pole connector (emitter), M23 19-pole connector (receiver), M12 5-pole connector (Muting sensors)
-------------	---

MTTFD (ISO13849) years	100
------------------------	-----

PFHD (IEC 61508)	7,70E-09
------------------	----------

Safety outputs	2 fail-safe PNP (500 mA at 24 VDC)
----------------	------------------------------------

Safety functions	Integrated
------------------	------------

Detection	Access control
-----------	----------------

Protective enclosures	None
-----------------------	------

Packaging dimensions HxLxW (mm)	160 x 1280 x 180
---------------------------------	------------------

Product class	C
---------------	---

Custom tariff	85365019
---------------	----------

Electrical data

Power supply (VDC)	24 ± 20%
--------------------	----------

Mechanical data

Overall height (mm)	1076
---------------------	------

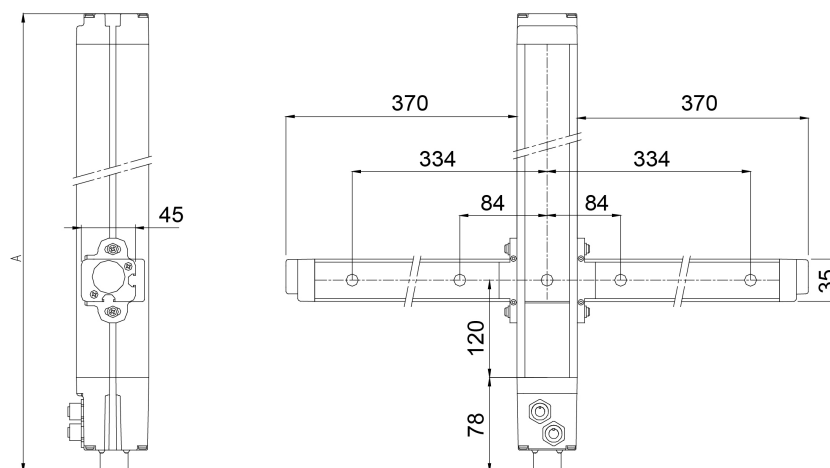
Cross section dimensions (mm)	50 x 60
-------------------------------	---------

Degree of protection	IP65
----------------------	------

Fastening	Back slot, side slot with set of LL type brackets (included). SFB 4J swivel brackets (optional)
-----------	---

Gross weight (g)	10188,6
------------------	---------

Technical drawings



Certificates

